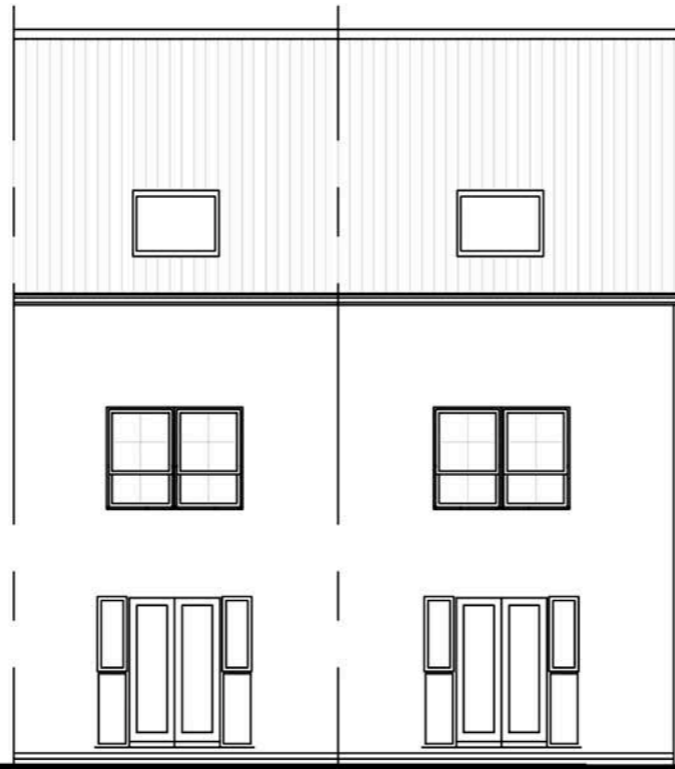


**FRONT ELEVATION**

Kingsville (end)

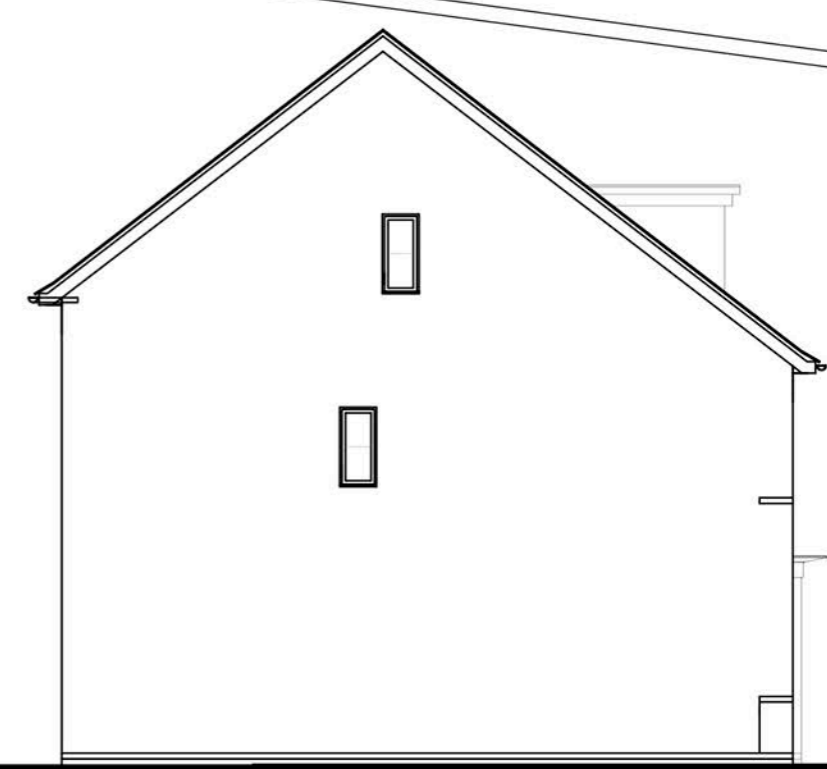
Kingsville (mid)



**REAR ELEVATION**

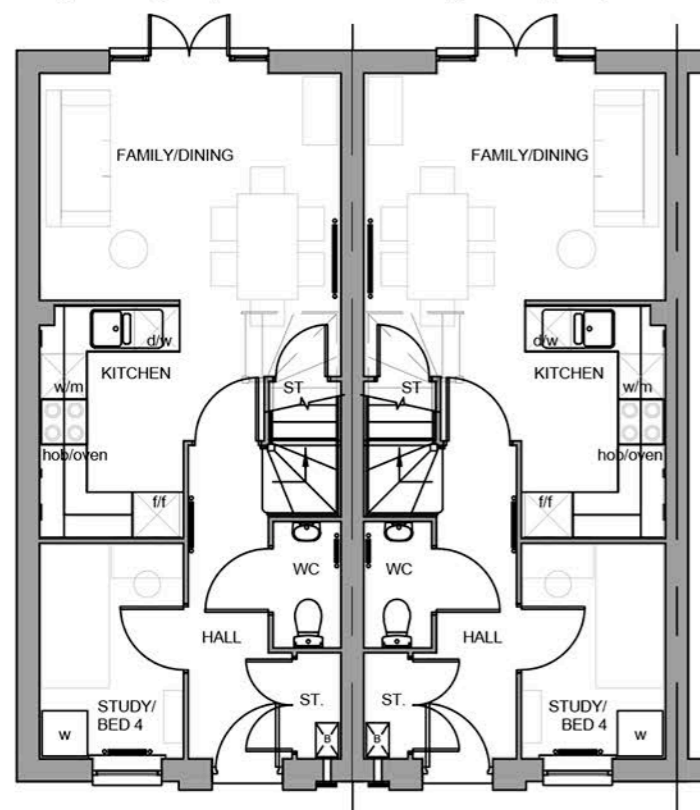
Kingsville (end)

Kingsville (mid)



**SIDE ELEVATION**

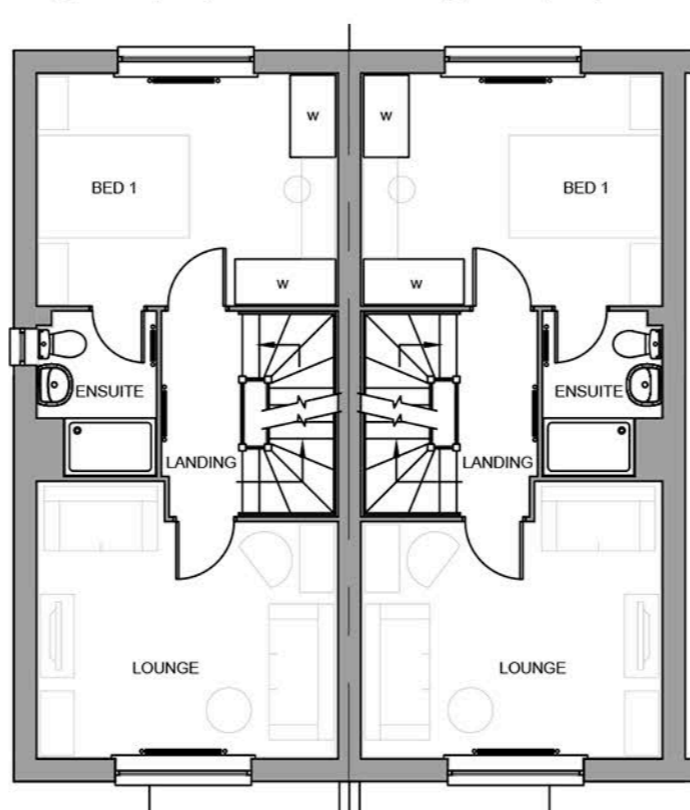
Kingsville



**GROUND FLOOR PLAN**

Kingsville (end)

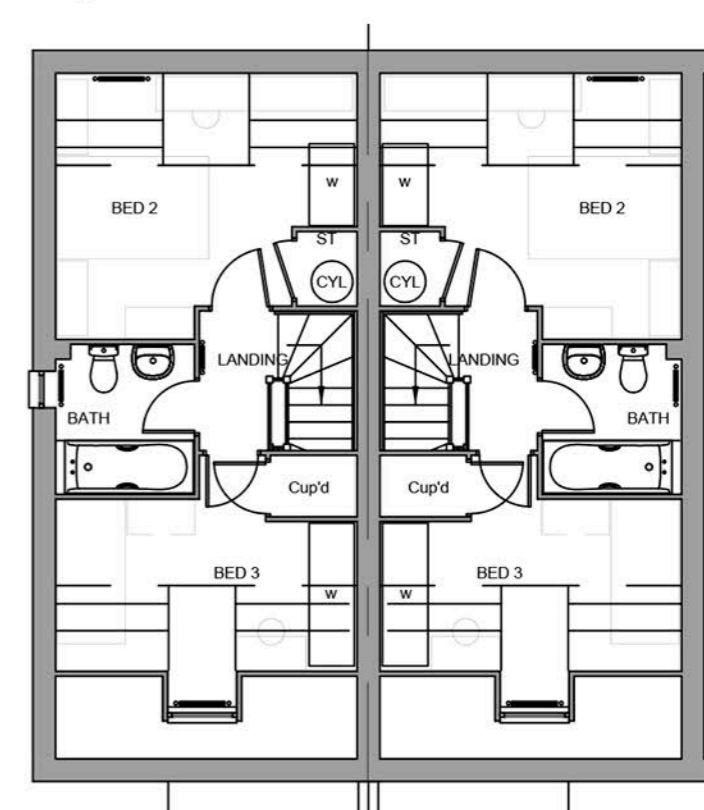
Kingsville (mid)



**FIRST FLOOR PLAN**

Kingsville (end)

Kingsville (mid)



**SECOND FLOOR PLAN**

Kingsville (end)

Kingsville (mid)

SCALED  
AT 1:100

1m

10m

Revision notes		
Rev	Date	Comments

Drawing Number:  
KIN-01

Client:  
Barratt Homes  
North East

Project:  
Aldair Way  
Bedwell

Drawing Title:  
House type planning drawings  
Kingsville

Date:  
March 2016

Scale @ A3:  
1:100

Revision:  
--



STEN Architecture Ltd  
Suite 10, Unit 3,  
Benton Office Park,  
Bennett Avenue,  
Horbury,  
Wakefield,  
WF4 5RA  
Tel: 01924 669424

Web: [www.sten-architecture.co.uk](http://www.sten-architecture.co.uk)  
Twitter: @STEN\_arch  
Facebook: [stenarchitectureltd](https://www.facebook.com/stenarchitectureltd)  
LinkedIn: Sten Architecture

